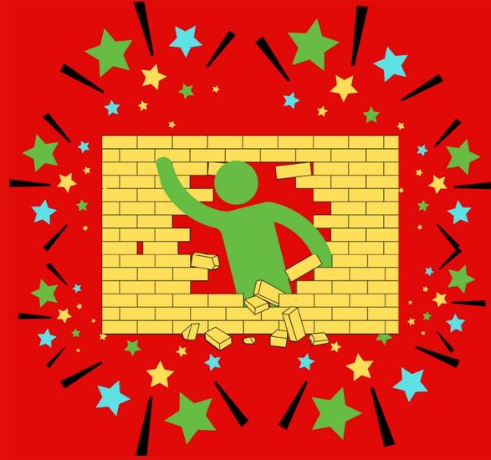


**Breaking Barriers and
Embracing Possibilities**



One Walk, Big Strides for Autism 2025



Registering for One Walk, Big Strides for Autism

The screenshot shows the top navigation bar of the Autism Society South Central Wisconsin website. It features a red header with a logo on the left, a 'Sign Up' button, a 'Donate' button, and a user profile icon. Below the header is a navigation menu with links for 'WALK INFO', 'FIND A PARTICIPANT', 'FUNDRAISING TIPS', 'TOP FUNDRAISERS', 'FAQ', 'SIGN UP', and 'MORE'. The main content area has a red background and features a central illustration of a green stick figure breaking through a yellow brick wall, surrounded by colorful stars and confetti. To the right of the illustration, the event title 'Breaking Barriers and Embracing Possibilities' is displayed in large yellow text, followed by the date and time 'April 27th, 2025 - 11:00 AM' and the location 'McKee Farms Park - Fitchburg, WI' in blue text. Below this, the event name 'One Walk, Big Strides for Autism 2025' is written in white text, and the Autism Society South Central Wisconsin logo is at the bottom right.

**You can register for our walk on Run Sign Up. You can access this in two ways:
Visit our website and go to our walk page: <https://autismsouthcentral.org/walk/>**

**Or go directly to our Run Sign Up page:
<https://runsignup.com/Race/WI/Fitchburg/OneWalkBigStridesforAutism>**



Virtual Participation

\$10

April 27th, 2025

Sign Up

April 27th at 11:00 AM

McKee Farms Park

\$20

11:00AM CDT

Sunday, 4/27 at 11 am at McKee Farms
Park

Sign Up

It's more than a walk, it's about connection!

Connecting individuals.
Connecting families.
Connecting schools.
Connecting businesses.
Connecting organizations.
Connecting communities as we walk together throughout South
Central Wisconsin.

Connections are what bring us together, and together we can

Support our Autism community!

Register: \$20 adult, \$10 child age 3-17, free for children age 2 and
under

Create a team: Create a team and invite your friends, family, and
coworkers to join you!

Join an existing team: Know anyone with a team? Join it! The more,

Scroll down on the main page until you see our two events: Virtual Participation and McKee Farms Park. Click “Sign Up” under the event you would like to register for.



Registrant #1

[Clear all fields](#)

[Sign In](#)

Login with your RunSignup account.

Who are you registering? *

First Name *

Last Name *

Email Address *

Confirm Email *

Create Password ⓘ *

This will be the password for your RunSignup account.

Confirm Password *

Date of Birth *

Gender

Male Female

Phone *

This is where you will enter in your personal information to register for the walk. If you attended our walk before, sign in to your Run Sign Up account to retrieve all of your information and reactivate your team (if you were the team captain).

Choose Your Event(s) *

Virtual Participation

\$10.00 + \$0.80 SignUp Fee ⓘ

Special Pricing

Entry fees: \$10 adult, \$5 for children aged 3-17.

Virtual participants will not get a t-shirt.

For those who are unable to walk with us at McKee Farms Park, you can register to walk with us virtually.

April 27th at 11:00 AM

McKee Farms Park

\$20.00 + \$1.10 SignUp Fee ⓘ

Special Pricing

Sunday, April 27th, 11:00 am at McKee Farms Park in Fitchburg, WI.

*The distance of this walk is about 1-mile long.

After you enter in your personal information, you will scroll down and confirm which event you would like to register for.

Register by April 13th to be guaranteed a t-shirt!

+ Add Another Registrant

Waiver [Open waiver in new window](#)

In consideration of you accepting this entry, I, the participant, intending to be legally bound do hereby waive and forever release any and all right and claims for damages or injuries that I may have against the Event Director, RunSignup.com, and all of their agents assisting with the event, sponsors and their representatives, volunteers and employees for any and all injuries to me or my personal property. This release includes all injuries and/or damages suffered by me before, during or after the event. I recognize, intend and understand that this release is binding on my heirs, executors, administrators, or

By checking this box, I agree to the waiver and that I am 18 or older, or that I have the authority to register these participants and agree to the waiver for them, and agree to the [Privacy Policy](#).

Continue

R

You will then have the option to register another individual (a child, spouse, etc.). You will then need to agree to our safety waiver before clicking “continue”.



Register For
One Walk, Big Strides for Autism
Fitchburg, WI 53711

[Back to Walk Website](#) ✕

Questions

T-Shirt Option *

--- Select An Option --- ▾

Check [here](#) to opt out of receiving the Autism Society of South Central Wisconsin once or twice a month email newsletter

Opt out

[Continue](#)

[Back](#)

R

If you registered for our walk at McKee Farms Park, you will then be prompted to choose your walk t-shirt size if you are registering before April 13th.



Register For
One Walk, Big Strides for Autism
Fitchburg, WI 53711

[Back to Walk Website](#) ✕



One Walk, Big Strides for Autism

Donation Goal: **\$75,000**

Thank you for registering for One Walk, Big Strides for Autism. We truly appreciate your support!

The Walk is our biggest fundraiser of the year and is a large part of our annual budget. We are a small non-profit organization that relies fully on the support of our community and we would love your help!

Our goal for the 2025 walk is \$75,000!

The money raised from this event allows us to provide support groups, social groups and educational opportunities to our local Autism community, often free of charge. Your support of the walk will help us continue this work.

We have supported Autistic individuals and their families since 1969, working to address areas of need and expanding support for the Autism communities in ten Southern Wisconsin Counties: Columbia, Crawford, Dane, Grant, Green, Iowa, Lafayette, Richland, Rock and Sauk.

Fundraiser

The next page you will see goes over our fundraising goals and fundraising teams.



Create or Join a Team

In addition to being a Fundraiser, you can also join or create a Team to set and achieve a goal with others! Teams have personal pages and funds raised contribute toward the team goal.

Join a Team

Create a Team

No



Donation

Donation
\$1,000

Donation
\$250

Donation
\$100

Donation
\$50

Custom Amount

Enter a custom donation amount or select a donation level above.

\$ **0.00**

If you are registering for the first time, you will have the option to join an existing team or create a new team for your family and friends. You can also make a personal donation to your team to start your fundraising.



Register For
One Walk, Big Strides for Autism
Fitchburg, WI 53711

[Back to Walk Website](#) ✕

Card Number *



Expiration Date *

CVV *

First Name *

Last Name *

Street Address *

Country *

Zip Code *

City *

State *

Save my credit card for a quicker registration next time.

Purchase Summary

	Item	Total
	McKee Farms Park test test	\$20.00 \$20.00
	T-Shirt Adult L	\$0.00 \$0.00
	Sales Tax ⓘ	\$1.10 \$1.10
	Coupon Code ⓘ	
	<input type="text"/>	<input type="button" value="Apply"/>
	Base Cost:	\$21.10
	Processing Fee: ⓘ	\$1.14
	Total:	\$22.24

The final page will collect your payment. You will also be able to confirm your event and t-shirt size under “Purchase Summary”.



Fundraiser

Manage ▾



Donate

Join Team

\$0 Raised of \$1,000



Story

Welcome to my fundraising page for the 2025 One Walk, Big Strides for Autism. Please join me in registering for the walk or making a donation to the Autism Society of South Central Wisconsin. (ASC) This is their largest fundraiser of the year and it helps fund their numerous efforts supporting the Autism spectrum community.

Those on the Autism spectrum and their families have been supported by this Autism Society of America affiliate in South Central Wisconsin since 1969. This wonderful organization is always working to address areas of need and expanding support for the Autism communities in ten Southern Wisconsin Counties: Columbia, Crawford, Dane, Grant, Green, Iowa, Lafayette, Richland, Rock and Sauk.

The ASC does an incredible amount of work to provide support for those on the autism spectrum and their families. All of the money raised from One Walk, Big Strides for Autism stays right in south central and southwestern Wisconsin and allows the ASC to continue programs like Autism 101 workshops, support and

Recognitions



[View All Recognitions](#)



Team

This is what your fundraising page will look like. You can edit your story and personalize it to share with your family and friends why you are choosing to participate in this event and why Autism acceptance is important to you. You will also see you Team Name and awards you may receive. People who have this link can make a donation to your team or join your team.

Reach Your Goal Faster with Facebook

- 1 Connect this fundraiser to Facebook
- 2 Invite friends, share updates, and collect donations on Facebook.
- 3 We'll keep track of your progress for you. The money you raise on Facebook will count towards your goal.

 [Create Your Fundraiser on Facebook!](#)

[Donate](#)

[Back](#)



[Walk Info](#)

[Find a Participant](#)

[Fundraising Tips](#)

[Top Fundraisers](#)

[FAQ](#)

[Sign Up](#)

On the bottom of your fundraising page you will see the option to create a Facebook Fundraiser. Unfortunately this tool is not currently working properly. Donations made through Facebook Fundraisers will not count towards your team donations.

We are working to get this resolved. In the meantime, you can share your fundraising link on social media to collect donations from friends and family.

Breaking Barriers and Embracing Possibilities

Our walk, Big Strides for Autism 2025
Autism Society

WALK INFO FIND A PARTICIPANT FUNDRAISING TIPS TOP FUNDRAISERS

Sign Up Donate

RunSignup

- Sign In
- Create Account
- Help

Breaking Barriers and Embracing Possibilities


April 27th, 2025 - 11:00 AM
McKee Farms Park - Fitchburg, WI

One Walk, Big Strides for Autism 2025

Autism Society

You can access your account at any point by going back to our Run Sign Up page and clicking on the little circle in the top right corner. This is where you can sign in to your account. Once you are signed in, click the circle again to access “My Profile”.


Upcoming Events Past Events Results Deferrals

 **27 APR 2025**
11:00am CDT

One Walk, Big Strides for Autism
📍 Fitchburg, WI 53711 US
Event: McKee Farms Park
Registrant: h

[Manage Registration](#)
[Resend Confirmation](#)
[Contact Walk](#)
[View Walk Page](#)

Fundraising

 **27 APR 2025**

Race: One Walk, Big Strides for Autism
Name:
Donation Period: January 9, 2025 - May 1, 2025
🔗 Your personal fundraising link will be here.

[Edit Fundraiser](#)
[View Donations](#)
[Send Emails](#)

Your profile is where you can see your upcoming events and access your fundraising page. You can share your personal fundraising link with family and friends or post it on social media to collect donations towards your walk team.